

STANDARD RESTROOM
(LOCATED IN THE NON-SALES / CORRIDOR)

LIGHTING

DOWNLIGHTS

SHELVING

CABINET (NS-17)

FINISHES:

WALL PAINT

FLOOR

WAINSCOT

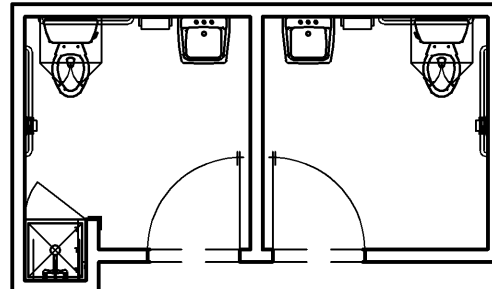
PT-1

FC-19

T-1

T-3

T-5



ELEVATED RESTROOM

LIGHTING

DOWNLIGHT

SHELVING

RECESSED CABINET (NS-36)

FINISHES:

WALL PAINT

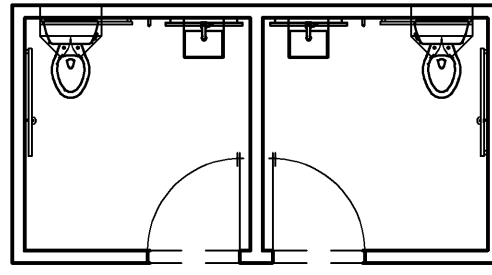
FLOOR

WALL TILE

PT-13

FC-18

T-7



ELEVATED RESTROOM W/ COUNTERTOP
(WITH OR WITHOUT TOILET COMPARTMENT)

LIGHTING

DOWNLIGHT

SHELVING

RECESSED CABINET (NS-36)

FINISHES:

WALL PAINT

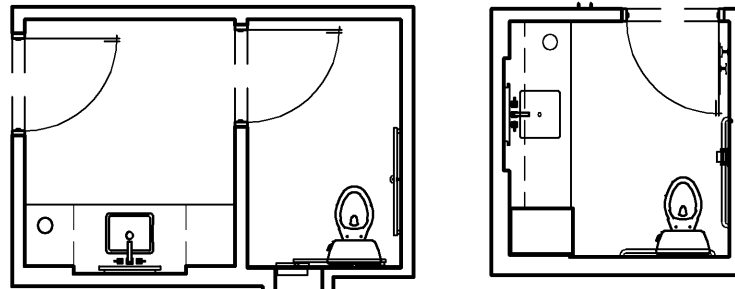
FLOOR

WALL TILE

PT-13

FC-18

T-7



RESTROOM LEGEND

FULL
42L-A051-000-LGND
10.14.11

FINISH NOTES

FULL
42N-A051-M00-NOTE
10.14.11

FC-18 CROSSVILLE TILE
LAYOUT @ ENTRY

3/4" = 1'-0"
42D-A051-H00-DETL
06.03.10

FINISH PLAN NOTES

FULL
42N-A051-D00-NOTE
08.31.09

REFER TO SPECIFICATIONS DIVISION IX FOR MORE INFORMATION.

PAINT:

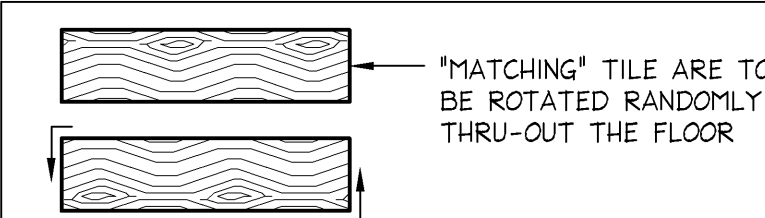
- CONTRACTOR TO REVIEW CONSTRUCTION DETAIL SHEETS, FLOOR FINISH PLAN, AND ELEVATIONS FOR HELPFUL CLARIFICATION OF ITEMS AND SURFACES TO BE PAINTED.
- CONTRACTOR IS TO PRIME ALL GYPSUM BOARD.
- ALL METAL SURFACES PAINTED BY PAINT CONTRACTOR ARE TO BE PRIMED WITH A HIGH QUALITY METAL PRIMER AND FINISHED WITH A HIGH QUALITY SEMI GLOSS PAINT. FINISH COATS MUST NOT REVEAL BRUSH MARKS. SPRAY OR APPLY AS NEEDED.
- ALL WOOD SURFACES TO BE PRIMED WITH AN ALL-PURPOSE 100% ACRYLIC LATEX PRIMER AND FINISHED WITH A LATEX BASE PAINT AS SPECIFIED ABOVE.
- FOR EXTERIOR STOREFRONTS: PRIME ALL WOOD WITH ALKYD PRIMER. USE BENJAMIN MOORE MOORCRAFT SUPER SPEC - SEMI GLOSS AS BASE FOR ALL COLORS.
- USING NON-SHRINKING FILLER, FILL AND PUTTY ALL NAIL HOLES, COUNTERSINK SCREWS, BOLTS, CRACKS, ETC. BEFORE APPLYING FINISH.
- WOOD DOORS: SEAL BOTTOMS, TOPS, AND EDGES. SAND ALL WOOD DOORS BEFORE FINISHING.
- NAIL WOOD TRIM BOARDS IN LEAST CONSPICUOUS LOCATIONS. SET AND FINISH SMOOTH.
- SAND ALL WOOD SURFACES SMOOTH AND EVEN BEFORE PAINTING.
- SAND ENAMELED FINISHES APPLIED TO WOOD OR METAL BETWEEN COATS WITH FINE SANDPAPER TO PRODUCE SMOOTH AND EVEN FINISH.
- MAKE FINISH WORK UNIFORM, SMOOTH, FREE OF RUNS, SAGS, DEFECTIVE BRUSHING AND CLOGGING. MAKE EDGES OF PAINT ADJOINING OTHER MATERIALS OR COLORS SHARP AND CLEAN WITHOUT OVERLAPPING.

FLOOR COVERING:

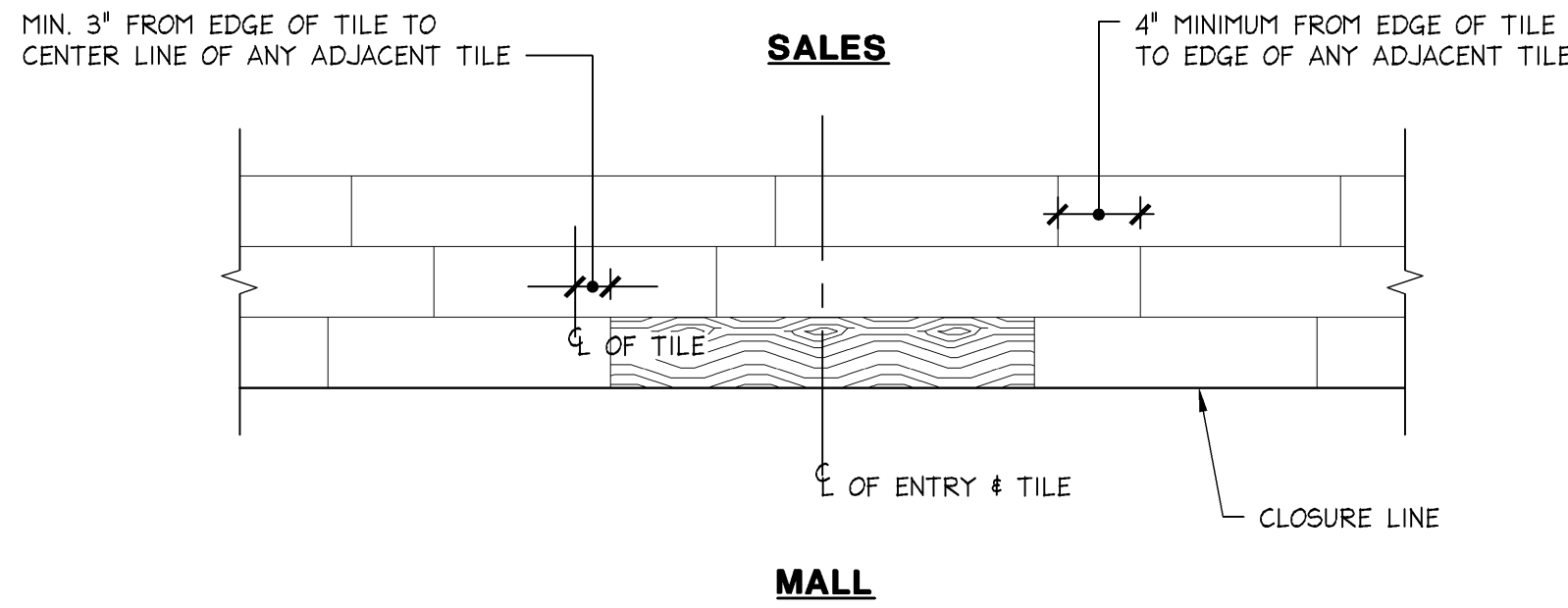
- CERAMIC TILES ARE TO BE INSTALLED MAINTAINING A CONSISTENT GROUT JOINT WIDTH THROUGHOUT THE MAXIMUM GROUT JOINT WIDTH IN SALES AREA IS TO BE 1/8", U.O.N.
- G.C. TO PROVIDE ZINC DIVIDER STRIP AT WOOD TO MARBLE, WOOD TO COCOA MAT, AND AT THE NON-SALES DOOR BETWEEN FLOOR FINISHES, WHERE APPLICABLE.

TILE AND GROUT SEALANT:

- APPLY SII IMPREGNATOR SEALER TO ALL SURFACES PRIOR TO GROUTING USING A MIRA BRUSH APPLICATOR OR A CLEAN, WHITE COTTON TOWEL. APPLY SUFFICIENT AMOUNT TO MOISTEN ALL SURFACES WITHOUT SATURATING JOINTS. AFTER SEALER STANDS FOR 3-5 MINUTES, BUFFING WITH A CLEAN, DRY TOWEL IS IMPORTANT. ALLOW TO CURE FOR 24 HOURS BEFORE GROUTING.
- AFTER GROUTING, REMOVE ALL EXCESS GROUT AND RESIDUE. ALLOW TO DRY FOR 24 HOURS. IF RESIDUE OR HAZE REMAINS, USE GROUT, CONCRETE AND FILM REMOVER, FOLLOWING LABEL INSTRUCTIONS.
- APPLY SII IMPREGNATOR SEALER TO ALL GROUT WITH A THIN PAINT BRUSH OR THE APPLICATION TIP. REMOVE ANY SEALER FROM PRE-FINISHED SURFACES BEFORE SEALER DRIES. FOR LARGER JOBS, GROUT MAY BE SEALED BY TREATING ENTIRE AREA, INCLUDING MARBLE, A SECOND TIME. ENSURE SEALER DOES NOT PUDDLE.
- SEALER WILL BE DRY TO THE TOUCH IN 45-60 MINUTES AND MAY BE USED FOR NORMAL FOOT TRAFFIC. IT IS RECOMMENDED TO KEEP SEALED SURFACES DRY AND FREE FROM STAIN FOR 72 HOURS.



G.C. TO INSTALL 6"x 24" & 6" x 36" TILE IN RANDOM PATTERN, ALTERNATING FROM MULTIPLE BOXES AND ROTATING TILES THRU-OUT THE STORE.



- REFER TO SHEET A06.1 FOR STOREFRONT FINISHES
- REFER TO SHEET A00.2 FOR FINISH SCHEDULE
- PAIN ALL EXPOSED WALLS & CEILINGS PT-1 U.O.N.
- PAINT ALL NON-SALES DOORS PT-5
- MITER ALL OUTSIDE CORNERS OF WALL BASE - COPE ALL INSIDE CORNERS
- TILE FLOORING TO BE SET BEFORE WOOD BASE. SCRIBE WOOD BASE TO TOP OF FLOOR AS BEST POSSIBLE AND CAULK GAPS.

